

INSTRUMENT
APPROACH
CHART - ICAO

AERODROME ELEV 741 FT
HEIGHTS RELATED TO
AD ELEV

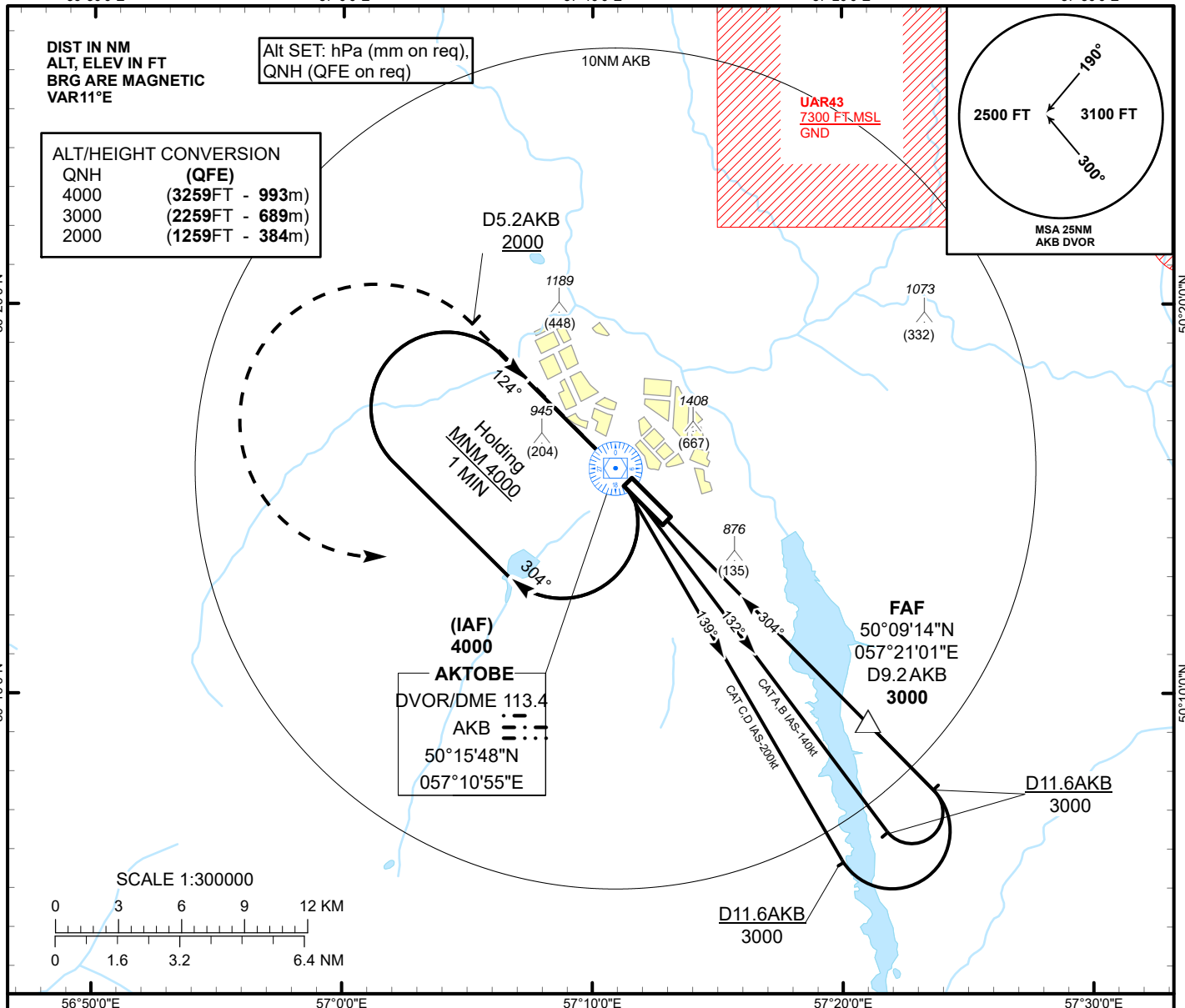
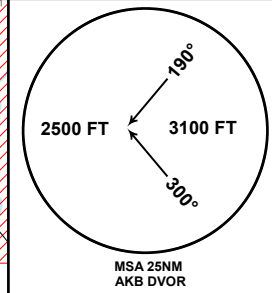
AKTOBE TOWER 128.0
AKTOBE ATIS (EN) 126.0
AKTOBE ATIS (RU) 127.80

AKTOBE
VOR/DME
RWY 30

DIST IN NM
ALT, ELEV IN FT
BRG ARE MAGNETIC
VAR 11°E

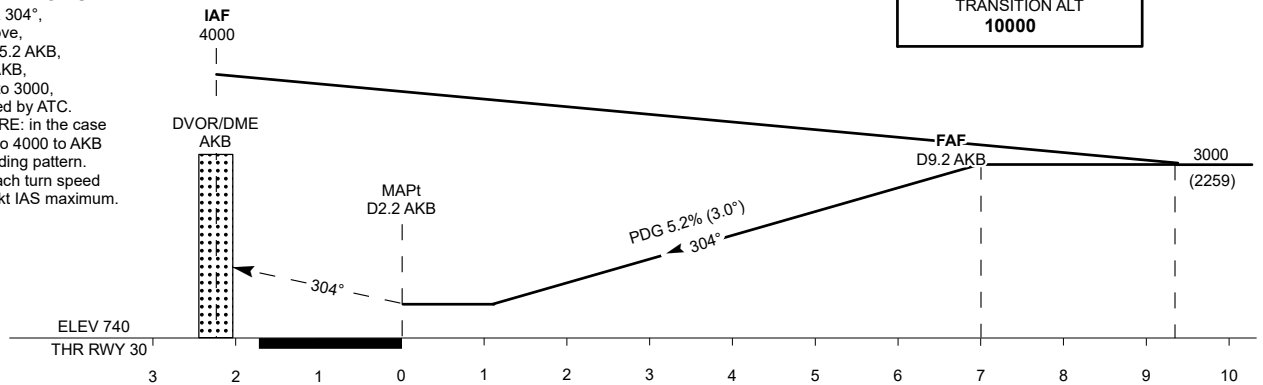
Alt SET: hPa (mm on req),
QNH (QFE on req)

ALT/HEIGHT CONVERSION	
QNH	(QFE)
4000	(3259FT - 993m)
3000	(2259FT - 689m)
2000	(1259FT - 384m)



MISSED APPROACH

Climb on track 304°,
at 2000 or above,
outbound to D5.2 AKB,
turn LEFT to AKB,
Climb initially to 3000,
then as directed by ATC.
RADIO FAILURE: in the case
of RCF climb to 4000 to AKB
and join to holding pattern.
Missed approach turn speed
limited to 240 kt IAS maximum.



Aircraft Category		A	B	C	D	DIST to THR	1	2	3	4	5	6	7
Straight-in Approach OCA/H						DME AKB	3.2	4.2	5.2	6.2	7.2	8.2	9.2
	VOR/DME	1160(420)	1160(420)	1160(420)	1160(420)	ALTITUDE	1108	1427	1745	2064	2382	2700	3000
						HEIGHT	(367)	(686)	(1004)	(1323)	(1641)	(1959)	(2259)
Aerodrome Operating Minima MDH ft x RVR(CMV)	VOR/DME					GS	kt	80	100	120	140	160	180
						FAF-MAPt 7.0NM	min:sec	5:15	4:12	3:30	3:00	2:38	2:20
						Desc.Rate(5.2%)	ft/min	420	530	630	740	840	950

AKTOBE (UATT)
VOR/DME RWY30

AERONAUTICAL DATA TABULATION

VOR approach to RWY30 from AKB DVOR/DME	
Fix/point	Coordinates
AKB DVOR/DME (IAF)	50° 15' 48.3"N 057° 10' 54.8"E
D9.2 AKB (FAF)	50° 09' 14.2"N 057° 21' 01.0"E
THR RWY30	50° 14' 09.59"N 057° 13' 16.51"E
Final approach descent angle is 3.0°	